

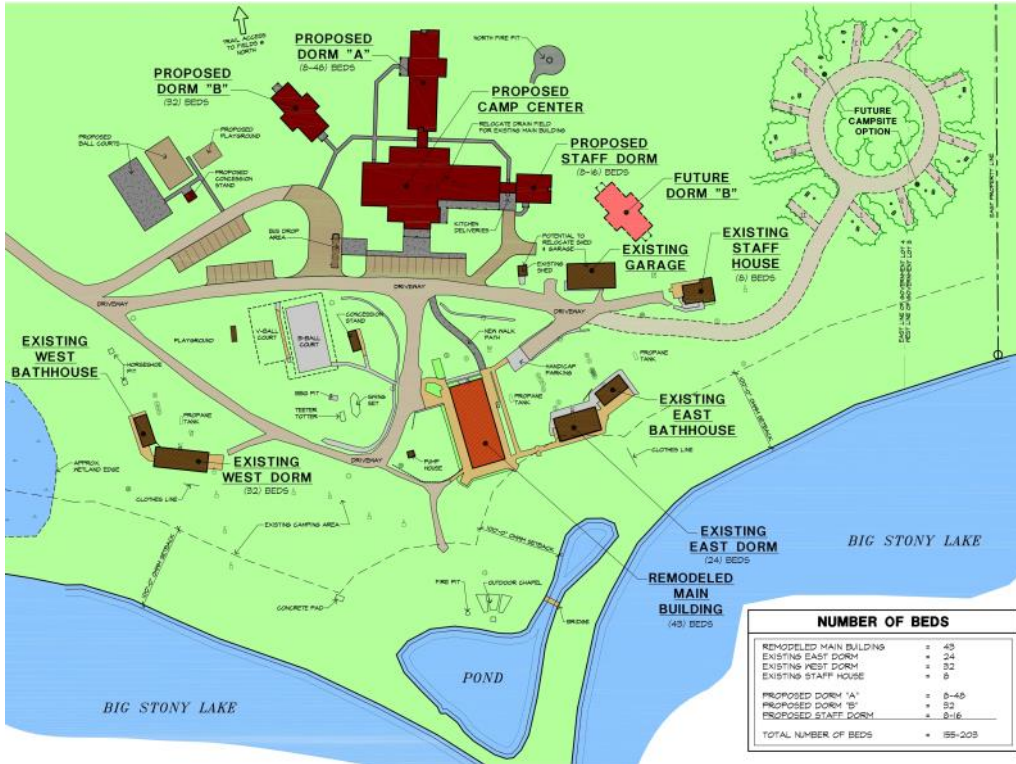
SLC Development Committee Summary

SLC Support Area Congregation Presentation Handout

January 2015

The LLC Board appointed development committee was asked to consider the existing and future needs of Stony Lake Camp and develop a proposal that could meet the future needs of the believers in the SLC support area.

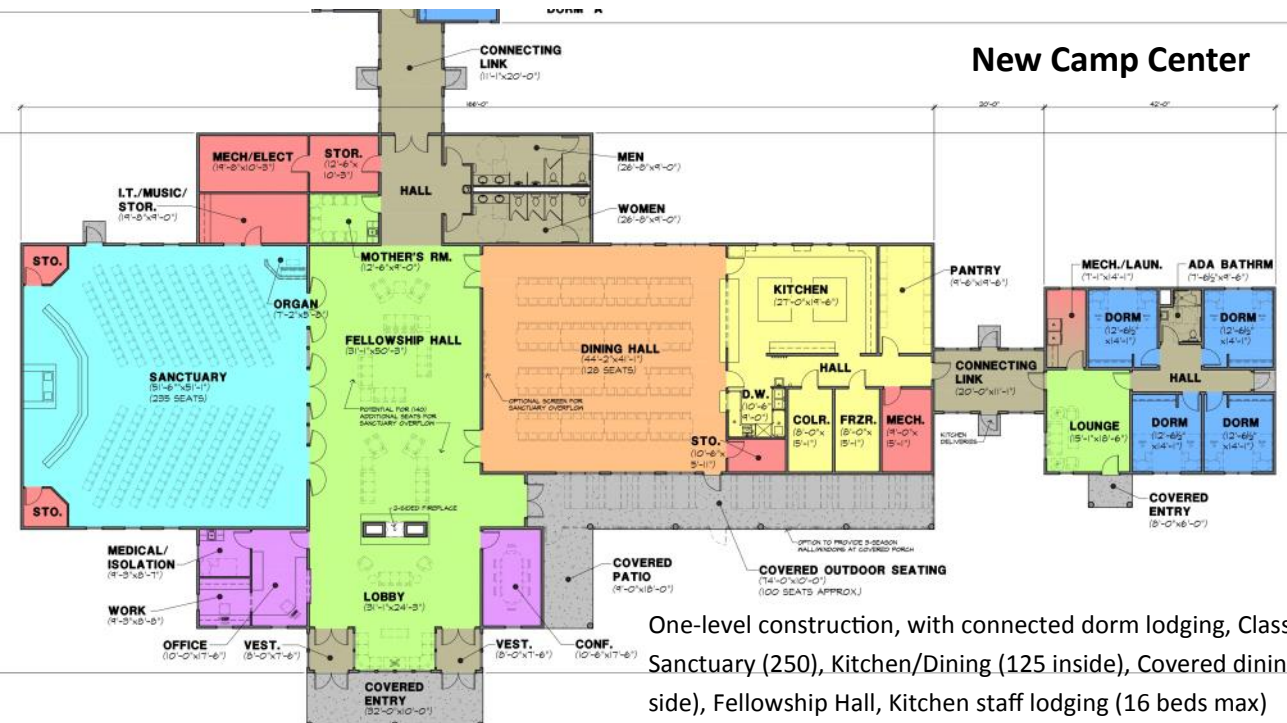
Conceptual Architectural Drawings



Site Plan

Outcomes of the SLC development Committee Work:

- Single level Camp Center with a multi-purpose dining/sanctuary/fellowship hall
- Increase lodging to double capacity (100 additional beds) allowing for simultaneous events and larger, single camps
- Any new buildings would be capable of year-round operations.

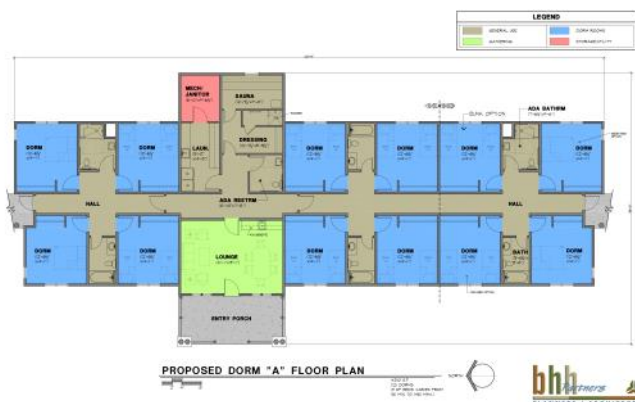


New Camp Center

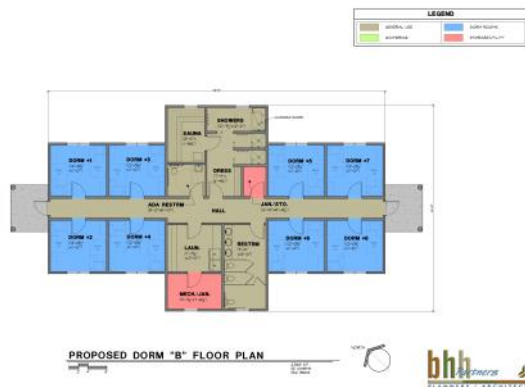
One-level construction, with connected dorm lodging, Classroom/Sanctuary (250), Kitchen/Dining (125 inside), Covered dining (125 outside), Fellowship Hall, Kitchen staff lodging (16 beds max)

Dorm Options

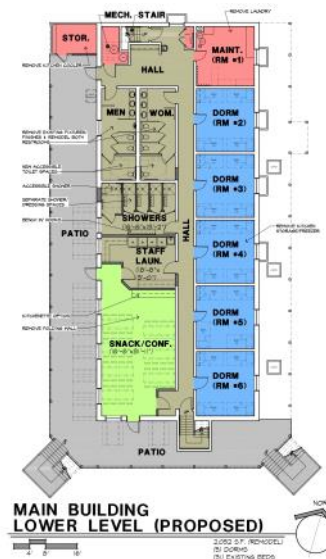
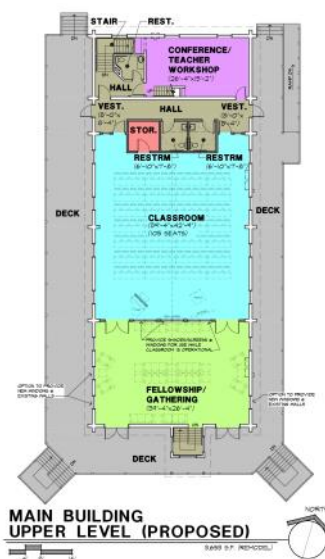
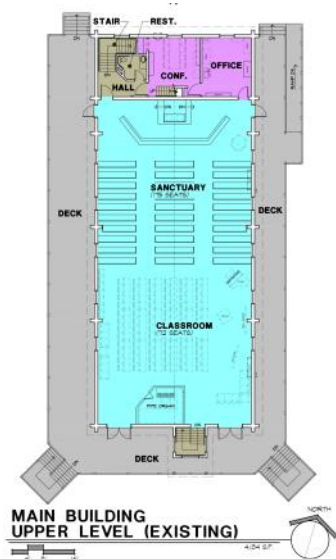
STONY LAKE CAMP EXPANSION



STONY LAKE CAMP EXPANSION



Remodeled Main Building



- What is your vision for Stony Lake Camp?
- How can we best meet the future needs in our area?

Your input and feedback is needed!

Steve Kallinen, SLC Director & Board Chairman

Nate Jurmu, Monticello LLC Member

Adrian Pirness, Christian Education Director & LLC Office contact

Dave Vonada, SLC Caretaker

Steve Collette, SLC Board Member

Nick Ylitalo, SLC Board Member

Mike Forstie, Cokato LLC Member

Contact any Committee Member or Adrian Pirness at the LLC office: Email: apirness@llchurch.org, work: 763-479-2422, cell: 763-360-0820